



# Head Start/ Early Head Start Annual Report

2022

July 1, 2021-June 30, 2022





## TABLE OF CONTENTS

About SHORE UP	3
Director's Message	4
Policy Council	5
School Readiness	6
Foster Grandparents Contributions	7
Health & Nutrition	8
Attendance	10
Parental Engagement	11
Recruitment	12
Success Story	13
Program Revenue & Expenditures	14
Our Locations	15

# About SHORE UP!, Inc.

**OUR MISSION:** SHORE UP!, Inc. is dedicated to strengthening communities, achieving goal-driven outcomes, and empowering individuals and families through a comprehensive system of services, resources, and strategic partnerships that charter a path to economic security and long-term independence.

**OUR VISION:** SHORE UP!, Inc. envisions communities on Maryland's Eastern Shore where individuals and families have the opportunities and resources to live with dignity, achieve their fullest potential, and become economically self-sufficient.



Freddy L. Mitchell  
Executive Director  
SHORE UP!, Inc.



Dr. Corey J. Bowen  
Program Director  
Head Start/Early Head Start

## Our Board of Directors:

**Elroy Brittingham, Chair**—Private Sector representative

**Craig Mathies, Sr., Vice Chair** — Public Sector representative

**William Dennis, Treasurer** — Private Sector representative

**Dr. Tyrone Chase, Secretary** — Low Income representative

Troy Brittingham, Jr. — Public Sector representative

Marshall Corbin — Public Sector representative

Cullina Cornish — Low Income representative

Nicole Frantz — Low Income representative

Dr. Kirkland Hall — Private Sector representative

Josh Hastings — Public Sector representative

Michael Hoy — Low Income representative

April Jackson — Public Sector representative

Dr. Jennifer Jewell — Public Sector representative

Carroll Mills — Private Sector representative

Nicole Moreno — Low Income representative

Lakeisha Pinder-Jackson — Low Income representative

Diana Purnell — Public Sector representative

Dr. Bernita Sims-Tucker — Private Sector representative

Ivory Smith — Private Sector representative

# Director's Message

FY22 was a year of momentous changes in our Head Start and Early Head Start Programs. Not only did we see operations slowly begin to return to normal as the COVID-19 pandemic subsided, we also made an important shift in providing these two programs.

Prior to this year, we operated Head Start in seven counties and Early Head Start in four counties. Because of a state push for pre-kindergarten expansion (Blueprint for Maryland's Future), pre-kindergarten education for three- and four-year-olds is more widely available than ever before. Further, the state's programs are open to a larger number of families due to less restrictive income eligibility requirements. Head Start programs require that a family have an annual income up to 125% of the federal poverty level (FPL) in order to be eligible for services, whereas the state's pre-kindergarten programs have an eligibility requirement of income up to 300% FPL for three-year-olds and up to 600% FPL for four-year-olds.

Faced with declining enrollment in our Head Start program, we petitioned the Office of Head Start to change our primary focus of operations. Beginning this year, we placed more of an emphasis on our Early Head Start program and expanded those operations to seven counties while reducing Head Start to four counties.

We continue to recruit and work in partnership with local school systems and other community organizations in order to maintain good enrollment levels. We are also exploring incentives and competitive salaries for program staff in order to attract and retain qualified employees.

While our focus has shifted from Head Start to Early Head Start, our goal remains the same: Preparing young minds for a lifetime of learning and academic success. As we move forward, we will begin to work more closely with the school systems within our service area to discuss how we can best support the implementation of the Blueprint for Maryland's Future. In the interim, please join me in celebrating the accomplishments of these programs both nationally and on the local level, at SHORE UP!

Corey J. Bowen, Ph. D.

Head Start/Early Head Start Director

# Policy Council

## Purpose:

The Policy Council is comprised of parents and community members who help make decisions regarding the Head Start and Early Head Start programs. Policy Council members meet regularly to think of creative ways to support and promote the programs, determine how funds are spent, decide which activities children should perform in their classrooms, evaluate/promote community partnerships, and more. They help to advance the mission of the Head Start and Early Head Start programs — to provide comprehensive, integrated, full-year services that promote school readiness for children from birth to five years of age.

According to the Early Childhood Learning & Knowledge Center website, “when Head Start began in 1965, its founders understood that parents are essential partners in educating young children. They felt parents should help decide how Head Start services can most benefit their family and other families in the community. Children, parents, and the program benefit when parents take on leadership roles. Children learn more and experience healthier development at school and at home. Parents become more confident, gain skills, and connect with other parents and staff.”

## Policy Council Officers:

Cullina Cornish, President

Vivian Todman, Vice President

Kathy Dickerson, Secretary

Ronald Campbell, Treasurer

# School Readiness

SHORE UP's Early Head Start and Head Start programs serve children from birth to age five in seven counties on Maryland's Eastern Shore: Dorchester, Kent, Queen Anne's, Somerset, Talbot, Wicomico, and Worcester. In order to ensure that our students are prepared for kindergarten, the Office of Head Start has established five domains for evaluating kindergarten readiness:

1. **Social and Emotional Development** — Children will display a sense of self-confidence in their abilities and a strong identity.
2. **Approaches to Learning** — Children will display an eagerness to learn, creativity and independence in interactions with activities and materials.
3. **Language and Literacy** — Children will engage with literature and language at a developmentally appropriate level.
4. **Cognition** — Children will use observation and manipulation, ask questions, make predictions and develop hypotheses to gain a better understanding of information and activities in their surroundings.
5. **Perceptual, Motor and Physical Development** — Children will demonstrate control of large and small muscles and develop healthy and safe habits.



84%

## Early Head Start School Readiness

School readiness data indicated that, on average, 84% of Early Head Start students were meeting age expectations in the five domains. EHS participants scored highest in Perceptual, Motor, and Physical Development, with 94% meeting expectations.

## Head Start School Readiness

School readiness data indicated that, on average, 78% of Head Start students were meeting age expectations in the five domains. These students scored highest in Social and Emotional Development, with 91% meeting expectations.



78%



# Bridging Generations to Improve School Readiness

Individuals who are age 55 or older can work as mentors in SHORE UP's Early Head Start and Head Start centers through the Foster Grandparent Program. Foster Grandparents work 20 hours per week with children who have special needs ranging from shyness to physical and developmental disabilities. These important mentors work closely with our classroom teachers in providing children with the academic tools needed for school readiness.

Ella Mae West (pictured on the left below), who has been a Foster Grandparent at SHORE UP since 2013, says that she loves reading stories to the children and playing with them, teaching them letters and numbers. She sits down with them every day when they are eating and talks to them. The children call her Mom Mom and give her lots of hugs, which makes her happy.

During the pandemic, our Foster Grandparents were able to meet with their Early Head Start students and parents via Zoom. Remote connections were important to sustain the work of the program, but nothing can compare to interacting one-on-one with the children in person. Our children and Foster Grandparents were very glad to get back into the centers.

Antoinette Bishop, pictured on the right, says that coming to the center gives her a sense of personal fulfillment because the children call her Mom Mom and hug on her. She says that it is great to feel so loved!



# Health & Nutrition

Good healthcare and nutrition is a goal for SHORE UP's program participants, and proper healthcare begins at an early age. In the agency's Head Start and Early Head Start programs, children receive monthly health and education services, such as medical, dental, and mental health screenings and assistance.

Below are the numbers of children enrolled and receiving these services in FY22.

196

Head Start children

280

Early Head Start  
children and expectant  
parents

53

Children enrolled at the  
Dorchester Early Learning  
Center (DELC)





# Health Services Resume

With the return of in-person learning in FY 2022, we have been able to go back to working with our community partners to provide routine health screenings and education for our program participants.

Since the return to center-based programs, we have had dental providers visit our Early Head Start/ Head Start centers to provide dental screenings and exams, as well as fluoride treatments for all enrolled children. Establishing good dental hygiene at an early age will lead to better oral health as the children grow.

We have also resumed our partnerships with local colleges, utilizing their nursing departments. The students in these programs conduct vision and hearing assessments to determine if the program participants have any need for corrective devices. We also have them check each child's height/weight to ensure that they are growing at an age-appropriate rate.

We are providing nutritious family-style meals daily and having enriched conversation around the different food groups to help these early learners see food as valuable fuel that provides us with the good health and energy we need each day.

Because education is the key to prevention, our Health Services staff holds regular trainings on topics such as breast cancer awareness for both men and women, understanding health insurance benefits, fire prevention, home safety, and other pertinent topics.



## Attendance

Consistent attendance is essential for children to benefit from their Head Start experience. Regular attendance has a direct impact on school readiness and future school success. It affects children's learning and helps instill good habits. This ensures that all children benefit from full participation in their Head Start program and develop important life habits that will serve them in school and beyond.

Below are SHORE UP's average daily attendance percentages for Head Start, Early Head Start, and DELC.

# 99.5%

Average daily attendance for Head Start children

# 95%

Average daily attendance for Early Head Start children and expectant parents

# 84.9%

Average daily attendance at the Dorchester Early Learning Center (DELC)



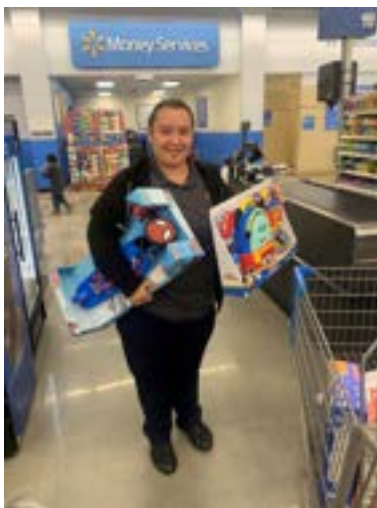
# Parental Engagement

SHORE UP hosts many parental engagement activities over the course of the year. These events include holiday parties, field trips, and parent meetings. One of our favorite annual parental engagement activities is holiday shopping.

In December 2021, SHORE UP received a grant from Draper Media/WBOC's Bless Our Children holiday campaign. Those funds were used to assist our Head Start and Early Head Start families with buying holiday presents for their children.

Before they begin shopping, the parents are provided with financial literacy instruction. We show them how to check prices of an item online or via the store's mobile app in order to do cost comparisons and get the best price. We also show them how to create a budget to use their funds strategically, anticipate extra expenses such as sales tax or shipping fees, and decipher the store's unit pricing labels for cost comparisons.

We love being able to enhance our students' holidays with these funds, and we never get tired of seeing these smiles!



# Recruitment

In an effort to serve as many families as possible in our seven-county service area, SHORE UP hosted or participated in multiple recruitment events throughout the year. Some of the events were:

- A recruitment event at the Haitian immigrant community center. This event was attended by at least 16 different households/families. *(Photo: lower right.)*
- In a collaboration with Pemberton Elementary School, we participated in a recruitment event at a nearby subsidized housing apartment complex. *(Photo: upper right.)*
- Our Crisfield Head Start Center held a recruitment event with 23 families in attendance. *(Photo: lower left.)*
- Since the beginning of the COVID-19 pandemic, the Lower Shore Vulnerable Populations Task Force has been holding monthly “One Stop Shop” events for low income and immigrant populations in our area. SHORE UP participated in these events as an outreach for our Head Start and Early Head Start programs.
- Our Salisbury Center held a literacy and recruitment event for local families.





## Head Start Mother Goes from No Diploma to Master's Degree

When single mother Latanya Christopher came to SHORE UP's Early Head Start Program, she was struggling to carve out a life for herself and her three children. Her youngest had been born with a disability, her two older children were a teenager and pre-teen, she was attending classes at her local community college, and she could not afford daycare for her special needs infant.

Because Early Head Start gave her the time and resources she needed to care for her young son, as well as valuable insights and encouragement from program staff, Latanya was able to continue pursuing an education. And pursue it she did! Latanya received her high school diploma, Associate's Degree in Chemical Dependency Counseling, and a Bachelor's Degree in Social Work... but she did not stop there. She went on to earn a Master's Degree in Administration of Human Services.

Best of all, Latanya is still involved with the Head Start and Early Head Start programs, even though her baby is now 13 years old! She has been hired as a Family Engagement Specialist at SHORE UP, and she looks forward to inspiring other mothers to follow in her footsteps and plan a future of economic security and long-term independence.



---

“I decided I wasn’t going to let my past ruin my future.

You can do anything you put your mind to.”

---

# Program Revenue & Expenditures

Financial, Monitoring, and Auditing Information								
July 1, 2021 -- June 30, 2022								
July 1, 2020 - June 30, 2021	Head Start	Head Start Training	Early HS	Early HS Training	Early HS Dorchester	Dorchester Family Support	State Supplemental	Total
Revenues								
Budget/Revenue	2,605,263	54,359	8,987,976	81,538	724,972	200,000	269,727	12,923,835
Expenses								
Personnel	290,000		3,474,947		250,513.00	128,652	22,425	4,166,537
Fringe Benefits	105,966		1,459,478		93,802	38,095	7,014	1,704,355
Communication	85,480		12,418		4,770	1,994		104,662
Travel	354	8,158		12,870	28			21,410
Equipment	56,484		2,672		3,808	748		63,712
Supplies	336,980		114,589	1,068	9,907	2,073	110,354	574,971
Rent & Utilities	244,860		134,055		30,017	2,972		411,904
Contractual	104,350		10,919	468	37,169	3,094		156,000
Vehicle Operation	389,000		111,271		33,452	2,733	-	536,456
Facilities/Construction			1,420,653		55,715	1,648	126,618	1,604,634
Other		46,201	257,321	67,132	56,072	4,991		431,717
								-
Direct Cost	1,613,474	54,359	6,998,323	81,538	575,253	187,000	266,411	9,776,358
Indirect Cost	492,449		480,801		39,750	13,000	3,316	1,029,316
								-
Inkind	499,340		1,508,852		109,969			2,118,161
								-
Total	2,605,263	54,359	8,987,976	81,538	724,972	200,000	269,727	12,923,835



# Our Locations

## **DORCHESTER COUNTY**

Hurlock Early Center  
6210 Shiloh Church-Hurlock Road  
Hurlock, MD 21643

St. Clair Center  
824 Fairmount Avenue  
Cambridge, MD 21613

Dorchester Early Learning Center (DELC)  
824 Fairmount Ave  
Cambridge, MD 21613

## **KENT COUNTY**

Chestertown Center  
115 S Lynchburg Ave Ste B  
Chestertown, MD 21620

## **QUEEN ANNE'S COUNTY**

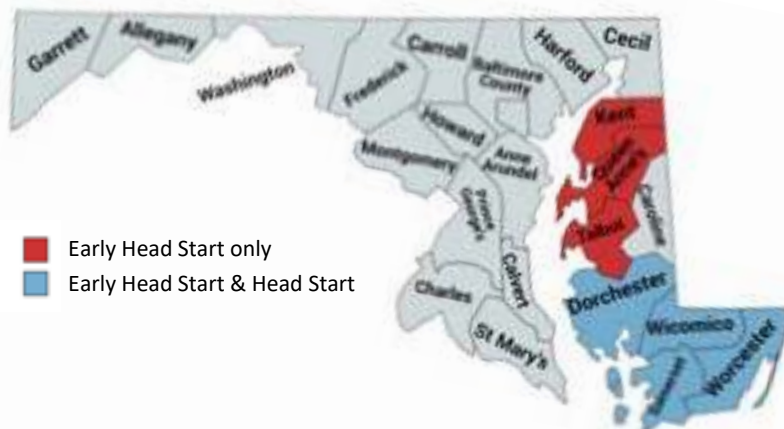
Grasonville Center  
5441 Main Street  
Grasonville, MD 21638

## **SOMERSET COUNTY**

Crisfield Center  
210 N Somerset Ave  
Crisfield, MD 21817

Princess Anne Center  
12549 Independence Ct  
Princess Anne, MD 21853

Westover Center  
8395 Old Westover Marion Rd  
Westover, MD 21871



## **TALBOT COUNTY**

Easton Center  
305 Glenwood Ave  
Easton, MD 21601

St. Michaels Center  
100 Seymour Ave  
St. Michaels, MD 21663

## **WICOMICO COUNTY**

Eden Center  
30842 Eden-Allen Rd  
Eden, MD 21822

Salisbury Center  
520 Snow Hill Rd  
Salisbury, MD 21804

## **WORCESTER COUNTY**

Berlin Center  
130 Flower St  
Berlin, MD 21811

Snow Hill Center  
6352 Worcester Highway  
Newark, MD 21841

Stockton Center  
5480 Stockton Rd  
Stockton, MD 21864

**For enrollment or to get more information, please get in touch with us!**



Website: [shoreup.org](http://shoreup.org)

Email: [agency@shoreup.org](mailto:agency@shoreup.org)

Phone: 410-749-1142

Facebook: [facebook.com/ShoreUpInc](https://facebook.com/ShoreUpInc)

Twitter: [twitter.com/shoreup](https://twitter.com/shoreup)

Instagram: [Instagram.com/shoreup.inc](https://Instagram.com/shoreup.inc)